

Connected Corridors Stakeholder Update

August 2014

Greetings! This newsletter was created to update our Connected Corridors (CC) stakeholders and partners on the status of the I-210 CC Pilot. Our goal is to provide our stakeholders with interesting and useful regular updates.

Timeline

From collecting data, to meeting with additional stakeholders, to developing numerous models for the pilot, the CC team is busy tackling multiple aspects of the project. In the coming months, and in coordination with our partners, work will continue on user needs, systems engineering documents, and the Concept of Operations (ConOps). Figure 1 below shows a six-month outlook for the I-210 Pilot.

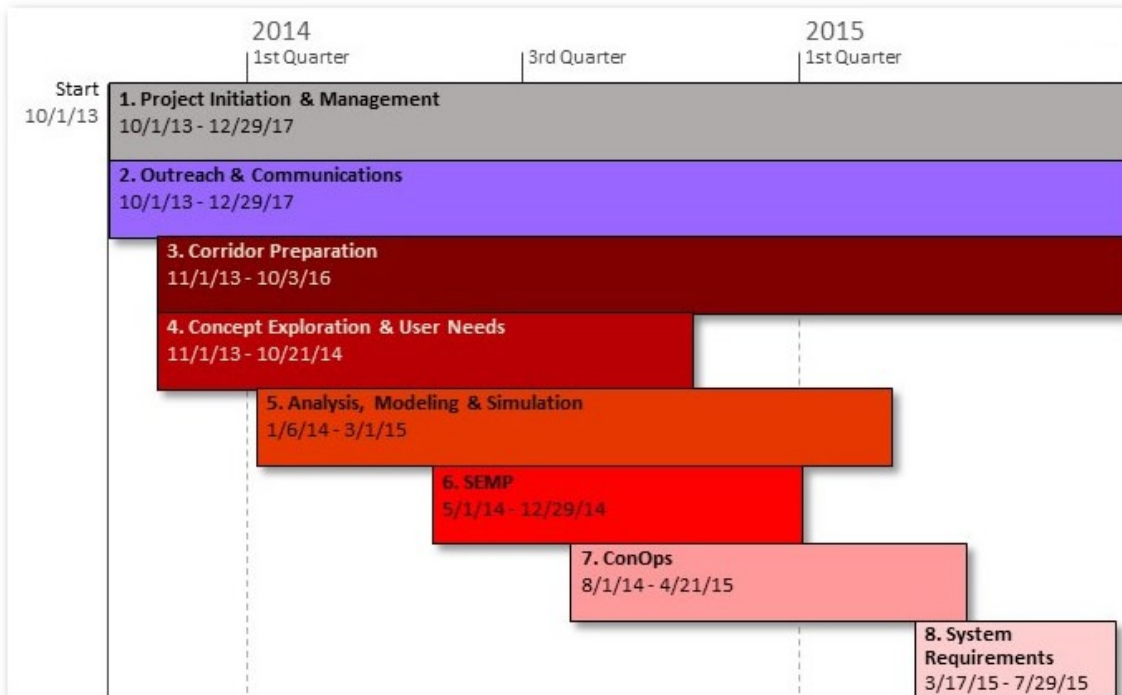


Figure 1

Outreach

Since April, Connected Corridors team members have met with several additional local stakeholders, including the Southern California Association of Governments, the San Gabriel Valley Council of Governments, the California Highway Patrol and LA County Coroner's Office, Metro Rail and Metro Bus, and Foothill Transit. The team is now working to schedule two additional user needs workshops focusing on first responders and transit operators. Local police and fire representatives will be encouraged to attend the first responder user needs workshop, and we will be reaching out to our city and county contacts to help us get in touch with the right individuals. Additional user needs identified in these workshops will be added to the user needs identified in the February workshop. A document containing approximately seventeen user needs from that meeting will be circulated for further review.

Connected Corridors Stakeholder Update August 2014

TRB Update

At the end of June, the Connected Corridors project was well represented at the Transportation Research Board’s (TRB) midyear meeting in Irvine, CA. There were four different poster sessions related to Connected Corridors, and Caltrans Director Malcolm Dougherty discussed Connected Corridors and the I-210 Pilot in his keynote speech. More details about this important event are available on the website:

<http://connected-corridors.berkeley.edu/news/connected-corridors-and-i-210-pilot-have-significant-presence-transportation-research-board%E2%80%99s>



Malcolm Dougherty

Data

To support the development of models and simulations, the team is busy collecting historical and real-time data for both the arterials and freeway. Thanks to everyone who has been working hard at the local and regional level to provide the requested information! Figure 2 shows the current status of arterial data collection. Caltrans and PATH researchers have also identified several freeway loop detectors that need to be repaired to ensure accurate model development.

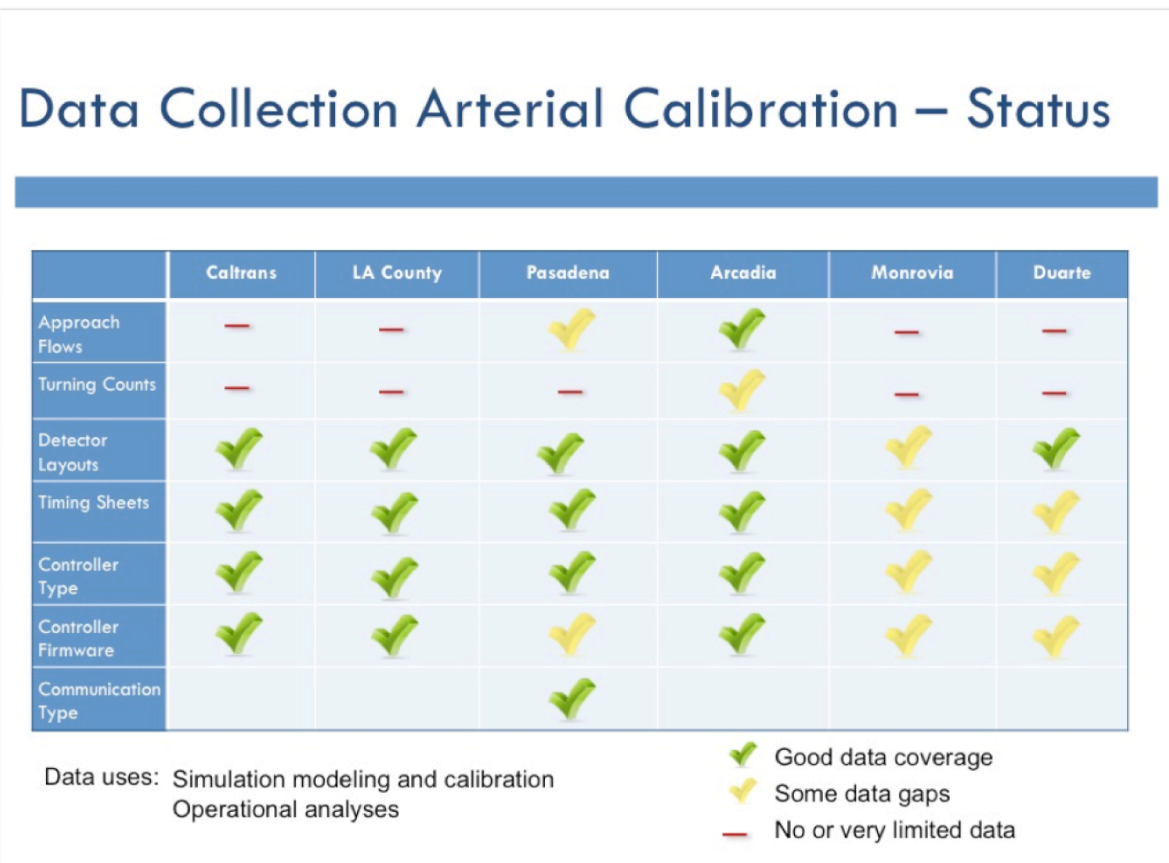


Figure 2

Connected Corridors Stakeholder Update August 2014

Systems Engineering

The Connected Corridors Program is following the systems engineering process (as shown in Figure 3 below) as encouraged by the Federal Highway Administration (FHWA) for Integrated Corridor Management (ICM) projects. As a part of this process, numerous documents are currently being drafted and reviewed for the I-210 Pilot, including a Project Management Plan, Systems Engineering Management Plan, Corridor Description, and Concept of Operations. A brief description and status update for each document is listed below:

1. **Project Management Plan:** The Project Management Plan describes the project management principles and procedures that will be applied to the design, development, and implementation of the I-210 Pilot.
 - Draft reviewed by PATH and Caltrans D7

2. **Systems Engineering Management Plan (SEMP):** The SEMP is the repository for project technical documents. It identifies what items are to be developed, delivered, integrated, installed, verified, and supported. It also specifies when these tasks will be done, who will do them, and how the products will be accepted and managed. Finally, it defines the technical processes to be used to produce each of the project's products.
 - Draft is underway

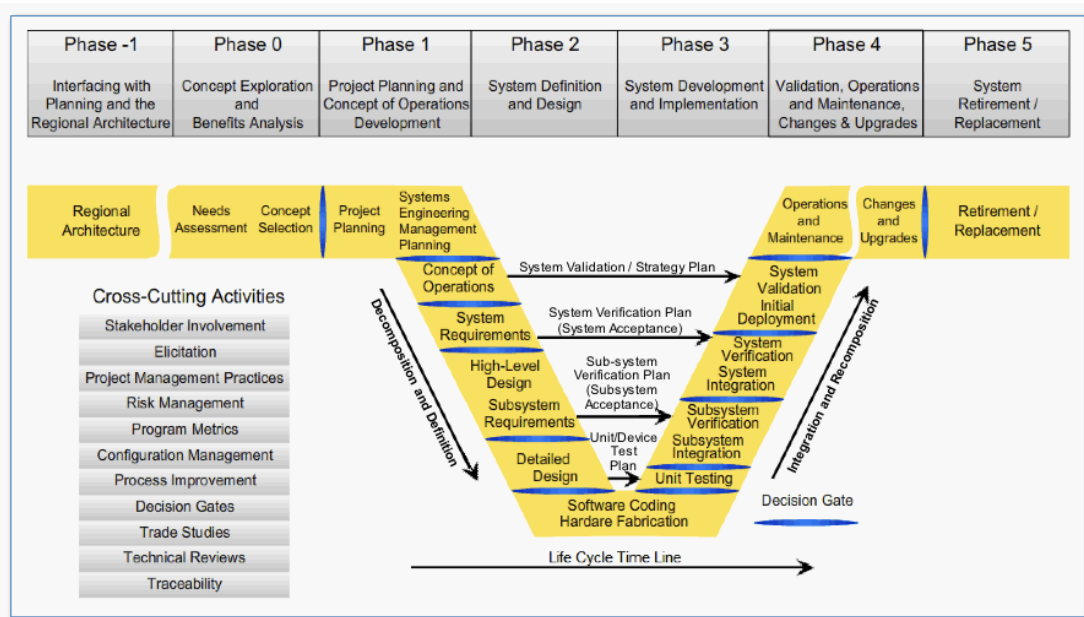


Figure 3

3. **Corridor Description:** The Corridor Description is a high-level description of the transportation corridor, including general background information on the I-210 Pilot.
 - First draft under PATH review

Connected Corridors Stakeholder Update August 2014

4. **Concept of Operations:** The purpose of the Concept of Operations is to answer the questions of who, what, when, where, why, and how for the application of an Integrated Corridor Management project within a corridor. Given that an ICM is a “system of systems,” involving multiple agencies and stakeholders, it is also essential that the ConOps define the roles and responsibilities of these participating agencies and other involved entities.
- The stakeholder description is complete
 - Working on characterization of user types

Analysis, Modeling, and Simulation

The Connected Corridors Program is also using the Analysis, Modeling, and Simulation (AMS) methodology supported by the FHWA. This methodology utilizes modeling and simulation techniques to identify the appropriate traffic management strategies for the corridor. For example, good models and accurate simulations are the foundation for determining the “on-the-ground” impact of diverting traffic to another route during an incident. Modeling is also how we determine the optimum ramp metering and signal light synchronization to use during an incident. Consequently, the CC team will be spending a lot of time working on AMS scenarios in the coming months. In the Fall, the team will host a series of workshops where those scenarios will be further refined with input from the stakeholders. Your participation in the workshops is important to the pilot’s success!

THANK YOU

A big thank you to all of our stakeholders and partners for your ongoing support for Connected Corridors and the I-210 Pilot. We look forward to seeing you in the near future and moving the project towards a successful implementation. We’ll be in touch again soon!



Connected Corridors Stakeholder Update August 2014

Contacts

If you have questions about the status of the I-210 Pilot or any of the information discussed in this newsletter, please do not hesitate to contact us.

Sam Esquenazi
Caltrans District 7
323.259.1764
sam.esquenazi@dot.ca.gov

Lisa Hammon
Connected Corridors/PATH
510.642.5923
lisahammon@berkeley.edu

Reinland Jones
LA Metro
213.922.2231
JonesRE@metro.net

Note to Stakeholders

Please tentatively mark your calendars for an important presentation and workshop on Tuesday, September 30th at the Caltrans D7 office at 100 South Main Street, Los Angeles, CA 90012 from approximately 9:30 am to 3 pm. Our colleagues from the San Diego Association of Governments (SANDAG) will be presenting the SANDAG I-15 ICM project and the steps from planning to implementation.

Details will follow soon!